

DAZOR®



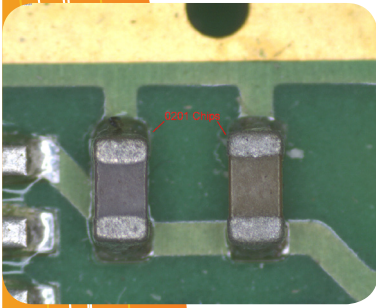
TOOLS FOR
**PRECISION
VISION**

speckFINDER
HD®

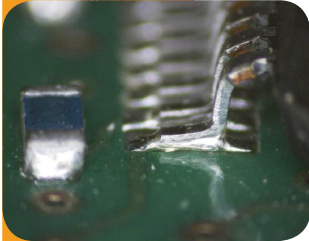
Dazor Manufacturing
2079 Congressional Drive
St. Louis, MO 63146

www.dazor.com
www.speckFINDER.com

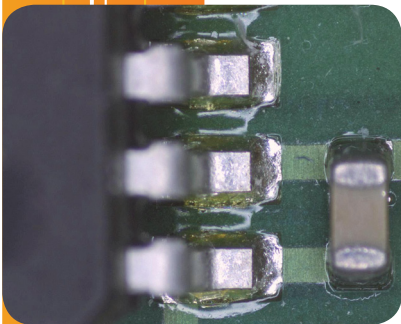
speckFINDER HD® Digital Computer Microscopes Statement of Product



speckFINDER HD® is the world's most advanced family of digital computer microscopes used for workstation applications and inspection in industrial and electronics working environments, scientific research, forensics, gemological laboratories, jewelry retail and manufacturing, and other similar work settings.



speckFINDER HD® technology completely integrates the technologies of high quality optics, digital cameras, LED lighting, glass displays, personal computing electronics, and mechanics, to produce a workstation-friendly digital computer microscope. Unlike conventional microscopes or stereoscopes with which a user must conform their body to a machine, speckFINDER HD® technology allows the user to obtain a comfortable posture and then adjust the machine to their individual comfort needs. Single or multiple workers can view magnified images simultaneously and effortlessly.

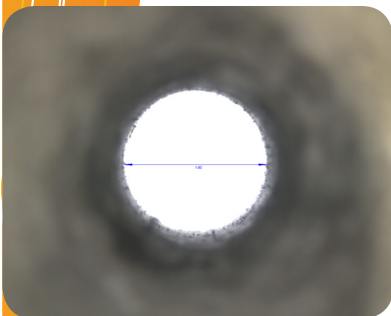


Images can also be stored in multiple digital formats, networked, and software enhanced as needed. Measurement, drawing, call-outs, and overlays are all conveniently available within speckFINDER HD's standard technology package. Live or stored speckFINDER HD® images can be viewed on another display or projected onto an overhead screen for training, instructing, or supervising.



speckFINDER HD's USB2.0 CCD camera is equipped with a host of features to allow the user to set a specified Area Of Interest, gain, exposure time, frame rate, and even digital output delay and duration. speckFINDER HD's camera software allows capturing of still images in JPEG, Bitmap and Tif file format or video in AVI format. In addition, the software can perform edge enhancement and image mirroring.

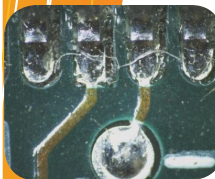
Partial speckFINDER HD® User List



Arnold AFB
Bakersfield PD
Boeing
Boston Scientific
Carelle
Caterpillar
City of Inglewood Crime Lab
City of Portland
Columbus St C.C.
Contra Costa Sheriff
Corning
Covidien
Danville C.C.
Del West/USA
Delaware St Police
Douglass County Sheriff-NE
Dover AFB
Dynamic Sealing Systems
Eagle Mold
Federal Mogul
Flextronics
Ford Motor Company
Fort Hood Dentac
Frymaster
GIZA Technologies
Canadian Gem Lab
Hamilton Sundstrand Industrial

HUF Mexico
Illinois St Police -2 labs
Jim Bennett Authentications
King County Sheriff-Seattle
Lockheed Martin
Medtronics
NASA/Johnson Space Center
Nashville Metro PD
Palace Jewelers
R.A. Time Capsule
Rivers Enterprises
Sam Houston State
Samsung Mobile
San Antonio C.C. Dental Lab
Sanmina
Scott AFB
Scottsdale, AZ Crime Lab
Siemens
St. Judes Medical
Swiss Police-Crime Lab
Tingay Dental Clinic
Toughbooks Direct
U.S.A. Dental
YE International (Finland)
Young Dental
Zimmer Dental

speckFINDER HD® Digital Computer Microscopes Specifications



speckFINDER HD

- Intel® Atom™ D510 Processor at 1.67 GHz with 1MB L2 cache
- 64GB Solid State Hard Drive
- 3x USB 2.0 ports
- 15-pin VGA output
- Hi definition 1280 x 1024 1/2" Interline CCD color optical sensor, 4.6µ square pixels
- Hi definition 1024 x 768 17cm TFT active matrix 16.7 million true color display, antireflective surface, 0.129 square pixel pitch, 200 PPI, and 600:1 contrast ratio
- Licensed Windows 7 Professional operating system, Video Toolbox image capturing software, Smart LED Ringlight Control
- Software for digital hardware and image control: Exposure, RGB color, gamma, gain boost, edge enhancement, white balance, image annotation, advanced measurements, reticles, font and color control, time and date stamp, and more
- Image capture formats: JPEG, BMP, TIF, AVI
- Wireless keyboard, mouse, and USB receiver
- Wireless or Ethernet Network capable (see accessories)
- 24-V universal power supply and cord
- UL, cUL, CE approved

Optics

User choice of optic included in price of speckFINDER HD "Head plus Lens":

Lens Choice	Lens Type	System Magnification		(mm) Working Distance	(mm) Field of View	
		Min	Max		Min	Max
V1	Parfocal Zoom	11	55	95	3	12
V2	Parfocal Zoom	22	110	45	1.5	6
V3	Parfocal Zoom	1.5	13	127	4.5	26.5
T1	Fixed Telecentric	-	5	160	-	25.6
T2	Fixed Telecentric	-	10	120	-	12.8
T3	Fixed Telecentric	-	20	83	-	6.4
T4	Fixed Telecentric	-	40	75	-	3.2
T5	Fixed Telecentric	-	85	44	-	1.6

Lighting

User choice of lighting is a required addition to your speckFINDER HD system.

- LED Dual Ring Light, dual row White, "Smart" Control
- LED Dual Ring Light, 1 row White + row 365nm UV-A, "Smart" Control
- High Frequency Fluorescent Ring light (5500K white or 365nm UV-A)

Mounting

User choice of lighting is a required addition to your speckFINDER HD system.

- 18" or 27" Hydraulic spring adjustable articulating arm
- Standard base with dimmable LED backlighting
- Platform table, with or without ESD safe mat.
- Gemological dark field light well base with reflected dimmable LED light engine

Accessories

- Factory install wireless or hard cable network connection
- 0.5X or 0.25X extenders for V1 lens. Decreases magnification and increases field of view
- XY Inspection Stage, ESD Safe

speckFINDER HD®
Digital Computer Microscopes
speckFINDER Pricing Schedule - FOB Factory (USD)



**HEAD + LENS
(PICK ONE)**

HEAD + LENS (PICK ONE)	DESCRIPTION	FOB-STL
SPECK-HD-V1	speckFINDER HD™, Variable Zoom Lens 11X-55X	5,335
SPECK-HD-V2	speckFINDER HD™, Variable Zoom Lens 22X-110X	5,535
SPECK-HD-V3	speckFINDER HD™, Variable Zoom Lens 1.5X - 13X	5,335
SPECK-HD-T1	speckFINDER HD™, Telecentric Fixed Lens 5X	5,335
SPECK-HD-T2	speckFINDER HD™, Telecentric Fixed Lens 10X	5,335
SPECK-HD-T3	speckFINDER HD™, Telecentric Fixed Lens 20X	5,335
SPECK-HD-T4	speckFINDER HD™, Telecentric Fixed Lens 40X	5,335
SPECK-HD-T5	speckFINDER HD™, Telecentric Fixed Lens 85X	5,335

BASES (PICK ONE)

-27A	27" Flexible Arm with Smart Clamp	465
-PB1	Platform Base	465
-SB1	Standard Base with LED Backlight	465
-GB1	Standard Dark Field Gemological Base	1,595

LIGHTING OPTIONS (PICK ONE)

-LRS1	LED Dual Ring Light, dual row White, "Smart" Control	575
-LRS2	LED Dual Ring Light, 1 row White + row UV, "Smart" Control	625
-HFFR	Hi Frequency Fluorescent Ring Light, 5500K	595

ACCESSORIES

SPECK-HD-WRLS	Factory installed wireless network adapter	90
SPECK-HD-CAT5	Factory installed USB2.0 to Cat5 hardcable network connection	50
SPECK-VZL05	0.50X Extender for Variable Zoom Lenses	170
SPECK-VZL025	0.25X Extender for Variable Zoom Lenses	245
SPECK-VZL025-POST	6" Post Extension for use with 0.25X Adapter	175
SPECK-TBL200-BK	Triple locking X-Y Adjustable Inspection Table	470
SPECK-1050-PRO	Heavy Duty 5-Caster Rolling Stand with Comfort Handle	815
SPECK-1050-KEYSH	Adjustable Keyboard Shelf for SPECK-1050-PRO	225

HOW TO BUILD ORDER:

Build System Part Number

SPECK-HD-V1	speckFINDER HD™, Variable Zoom Lens 11X-55X	5,335
-SB1	Standard Base with LED Backlight	465
-LRS1	LED Dual Ring Light, dual row White, "Smart" Control	575

SPECK-HD-V1-SB1-LRS1	Complete speckFINDER HD system	6,375
----------------------	--------------------------------	-------

Accessories

SPECK-HD-WRLS	Factory installed wireless network adapter	90
SPECK-TBL200-BK	Triple locking X-Y Adjustable Inspection Table	470
SPECK-VZL05 0.50X	Extender for Variable Zoom Lenses	170

Example Order Total Cost **7,105**

